

Canon

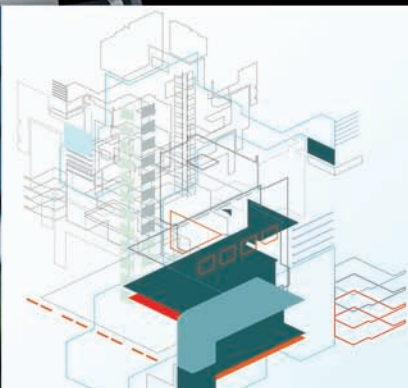
imagePROGRAF

 imagePROGRAF
MFP



**TECHNICAL
DOCUMENTS**

MFP LARGE-FORMAT IMAGING





Introducing the 36" and 44" imagePROGRAF MFP

Large-format scan-to-copy/file/e-mail solutions for technical document environments.

Designed for AEC, CAD, and GIS technical documents and general use, the 36" and 44" imagePROGRAF MFP large-format imaging systems help unlock the full potential of your productivity. This complete workflow solution provides a fast and effective system for copying, archiving, and distributing maps, drawings, renderings, site and facilities management plans, design and layout proofs, posters, and more.

FEATURES

- This **complete workflow solution** includes large-format scanner, printer, MFP stand, Dell computer, and intuitive touch-screen interface
- **Customize your system** and choose a compact 36" iPF755/750/710 printer or 44" iPF825/815 printer for maximum versatility
- CIS Scanning Technology for **incredible line definition** and **accuracy**
- Maximum achievable scan speeds of up to **10 inches per second** for monochrome plain paper documents
- Comes standard with the ability to scan to **PDF, JPEG,** and **TIFF** file formats
- 2400 x 1200 dpi printing with precise 4pl ink droplets for **high image resolution, clarity,** and **detail**
- Economy Print Mode allows for **lower cost of operation**

imagePROGRAF MFP

ADVANTAGES

Featuring advanced imaging technologies, the 36" and 44" imagePROGRAF MFP systems are built for the way you work.

VERSATILITY

Customize your system without compromising your workflow. Choose a 44" large-format system for maximum versatility or a 36" printer for high-speed printing of D- or E-sized drawings with a reduced footprint. The imagePROGRAF MFP provides room for plain paper documents up to 41" wide (40" image width). And its unique paper path returns documents to the front, allowing for a space-saving design with front-accessible operation for flush wall installation. And with a **large, simple-to-use touch-screen interface**, one-touch scanning/copying has never been easier.

MAXIMUM PRODUCTIVITY

Whether it's construction plans, drawings, maps, or business presentations, speed is critical when deadlines are tight. The imagePROGRAF MFP is a powerful production tool for many environments, allowing you to scan up to **10 inches per second for monochrome** and up to 1.67 inches per second for color. Engineered for high-volume printing, Canon's advanced system architecture and one-inch print-head with 15,360 nozzles achieve outstanding print speeds.

HIGH-PRECISION SCANNING

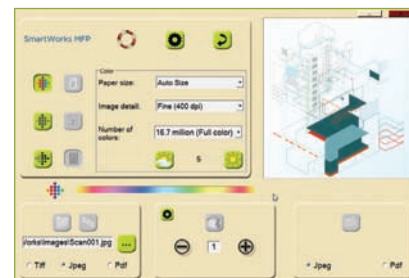
The imagePROGRAF MFP uses CIS technology to capture the finest image detail in technical documents, maps, sketches, hand-annotated drawings, and complex schematics. With **true 600-dpi optical resolution**, achieve exceptional monochrome performance with very sharp, clean, black-and-white images and high-definition color reproduction. And dynamic preview ensures that scans and copies match original hard-copy documents every time.

HIGH-QUALITY OUTPUT

Print complex schematics with super-clear small text fonts and crisp lines over color backgrounds, even on uncoated technical papers. A super-high-density print-head ejects tiny 4pl droplets of ink that consistently produce **2400 x 1200 dpi output with fine lines within +/- 0.10% accuracy** and as thin as 0.02mm. And Canon's unique 5-color Reactive ink set delivers durable, smudge-resistant prints with sharp lines and text, bold colors, and smooth fills.

ADVANCED SOFTWARE

A solution isn't just hardware. SmartWorks MFP gives you all the tools you need to quickly and easily scan large-format technical documents to copy/file/e-mail. With a simple-to-use interface and unique scan-it-once ability, SmartWorks MFP allows for **efficient batch scanning** and ensures that top quality scanned images are produced in the least amount of time.



Scan drawings, share documents, make last minute changes, and meet critical deadlines. A fast and effective large-format, capture-to-output solution, the imagePROGRAF MFP keeps projects moving forward, helping you be more productive than ever before.

With four lines of imagePROGRAF solutions available, Canon has the answer for your large-format needs.

imagePROGRAF



SCANNER SPECIFICATIONS

Scan Speed*

- 24-bit Full Color @ 200 dpi: 1.67" (per second)
- 8-bit Grayscale and Monochrome @ 200 dpi: 10" (per second)

Scan Modes

- 16.7-million Color RGB (24 Bit)
- 256 and 16 color RGB adaptive indexed color palette (8-bit and 4-bit)
- 256-level Grayscale (8 Bit)
- Black and White (1 Bit)

Color Space

Normalized RGB

Color Image Processing

Gamma, Brightness, Black-and-White Point Adjustment

Resolution

- 9600 dpi (maximum)
- 600 dpi (optical)
- Variable (100-9600 dpi, in one-dpi steps)

Scan Accuracy**

+/- 0.1% ; +/- 1 pixel

Maximum Image Width

40 Inches

Maximum Media Width

41 Inches

Maximum Media Thickness

0.012 Inches (0.3mm)

Media Feed System

Single large diameter precision ground drive roller; adaptive CIS media focus management and media guide mechanism; intuitive face-up, front-loading, and front-exit media path with side justification; automatic media size detection with reliable optical media sensors

Digital Imaging Technology

- Contact Image Sensor (CIS) Technology
- 5x close-spaced "deep focus" CIS (17,000 pixels)
- 48-bit RGB digital color image capture
- 16-bit grayscale image capture
- Panchromatic monochrome and black and white
- Bi-directional extra long-life LED light system for optimum object illumination and instant-on scanning capability

Digital Image Processing

- 2D Intelligent Adaptive Thresholding (IAT) (1-bit mode)
- Fixed Threshold Black and White (1-bit mode)
- Dynamic Normalization Application (DNA) with 16-bit super sampling

User Status and One-Touch Operation

Center mounted LCD scanner control panel; walk-up operation and user selection of scanner mode with stop, forward, rewind, scan, and copy buttons; local language options, and panel overlay

Included Software

SmartWorks MFP scan-to-file, copy, e-mail with real-time image viewer. Supports TIFF, JPEG, TIFF G4, and PDF.

Operating System

Windows 7

User Maintenance

Installable plug-n-play scanner; simple cleaning

Scanner Interface Kit

USB 2 Hi-speed

Operating Environments

10 – 30°C, 35-80% RH, non-condensing

External Power Supply

100-250 VAC autosensing +/- 10%, 50-60 Hz

Scanner Power Consumption

- 40Wh (Scanning)
- 4.2Wh (Stand-by)

Compliances

CB, CE, FCC, UL, RoHS, ENERGY STAR®

MFP Dimensions (H x W x D) (with Stand, Scanner and Monitor) (Does not include Printer)

67" x 57" x 31.5"

Package Dimensions (H x W x D)

19.3" x 57" x 22"

Package Weight

193 lb.

What's In The Box?

- imagePROGRAF Printer***
- CiC40 Scanner with power cord and USB 2.0 Cable (Scanner to Server)
- 2 Meter USB Cable (Server to Printer)
- CiC40 MFP Stand
- CiC40 MFP Stand Assembly Instructions
- SmartWorks MFP Software
- Dell Computer
- 21.5" Flat Panel Touch-screen Display (2 USB Ports)
- 13:1 Media Card Reader (6 USB Ports)
- DVD/CD-RW Drive
- MS Windows 7 Home Premium Operating System
- Installation and Operation Manual
- Operator Manual on CD-ROM

Compatible Printers

- imagePROGRAF iPF825
- imagePROGRAF iPF815
- imagePROGRAF iPF755
- imagePROGRAF iPF750
- imagePROGRAF iPF710

* The scan rate is proportional across the full range of resolutions supported by the scanner. Actual scan times will depend on the host system performance. Quoted top speeds may be limited by the effective bandwidth of the USB 2 and is not guaranteed for all media types.

** The quoted scan accuracy may vary depending on the operating environment and the thickness of the media.

*** Please refer to www.usa.canon.com/imageprograf for specifications for imagePROGRAF printer models.

Canon
image*ANYWARE*

1-800-OK-CANON
www.usa.canon.com

Canon U.S.A., Inc.
One Canon Plaza
Lake Success, NY 11042

As an ENERGY STAR® Partner, Canon U.S.A., Inc. has determined that this product meets the ENERGY STAR guidelines for energy efficiency. ENERGY STAR and the ENERGY STAR mark are registered U.S. marks. CANON, IMAGEPROGRAF, and the GENUINE logo are registered trademarks of Canon Inc. in the United States and may also be registered trademarks or trademarks in other countries. IMAGEANYWARE is a trademark of Canon. All other referenced product names and marks are trademarks of their respective owners and are hereby acknowledged. Some items may not be available at this time; please check for availability. Specifications and availability subject to change without notice. All printer output images are simulated. MFP shown with iPF750 printer.

©2010 Canon U.S.A., Inc. All rights reserved.

